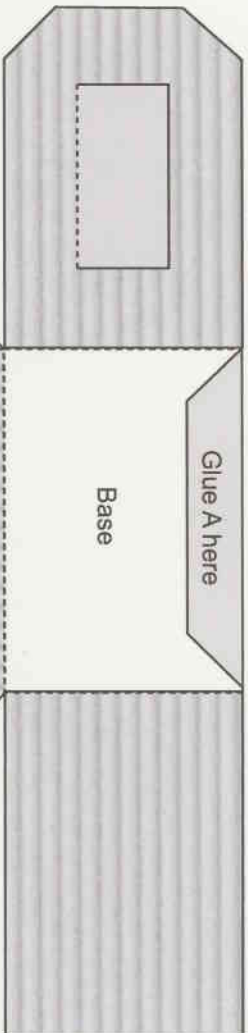


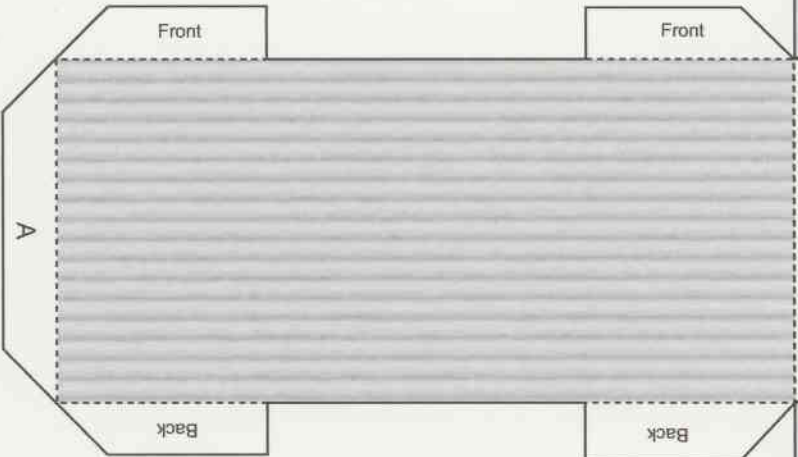
World War II Civilian Anderson Shelter



You will need:
 Glue
 Scissors or a craft knife
 Ruler

Anderson Shelter

- 1: Following the outline, cut out the Shelter taking care not to cut off the tabs.
- 2: Carefully score all the fold (dotted) lines.
- 3: Fold down all the tabs.
- 4: Glue the underside of Tab A onto the space marked on the base, forming an arch, corrugated side up.
- 5: Fold and glue the back panel to the back tabs, then the front panel to the front tabs.
- 6: Well done! Now make the Garden section to complete your model of an Anderson Air Raid Shelter.



Garden Base

- 1: Following the outline, cut out the Garden taking care not to cut off the tabs. Remember to cut the four short lines marked "cut".
- 2: Carefully score all the fold (dotted) lines.
- 3: Cut out the grey area in the centre.
- 4: Fold down all four sides to create a box shape and glue.
- 5: Carefully push the Anderson Shelter into the Garden base.

